



zeconex

Solar Battery Storage Solution Provider

## ZECONEX GROUP LIMITED

+ 86-755-84615006

sales@zeconex.com

www.zeconex.com

Building A, Hankun Hi-tech Industrial Zone, Longteng Road,  
Pingdi, Longgang District, Shenzhen, China



# ABOUT US

Zeconex is the leading manufacturer of electric vehicle charging systems, and battery energy storage system with solar inverters integrated in the global market, headquartered in Shenzhen, China.



Our team of ev charger, battery energy storage and inverters manufacturing experts is adept at understanding your energy needs and translating them into ev charger and battery energy storage that will fit right in and last for ages. We use only high-quality and other raw materials to ensure our ev charger, battery energy storage system and inverters are the best in the market.

Our top R&D team both in China and abroad, with rich experience in international protocol, which support us to offer OEM/ODM service for our clients all over the world. Welcome to be our partners.



Our wide range of new energy products are manufactured in-house, so we control all aspects of quality and functionality. We can tailor-make ev charger, battery energy storage system and solar inverter to suit your energy projects helping you realize your clean energy ideas.

Our product portfolio consists of Portable Charger, AC Charger, DC Charger, Power Module and Cloud Management System and Mobile APP, Battery Energy Storage System, Portable Power Station, Home Energy Storage System and Inverters, all independently developed by ourselves. We exported to more than 30 countries and regions since 2012.

**Welcome to be our partners!**

# Why Choose Us

**10+ years Expert**  
More than 10+ years Leading Manufacture in Battery Storage and Solar Inverters Industry.

**Quality Control**  
Zeconex only focus on the best quality Battery Storage and Solar Inverters products to make sure our business partners relieved and long time working with us.

**Production Capacity**  
We own and share 3 factories more than 300 employees and over 20,000 square meters area,each factory focus on different products line.

**Strong R&D**  
We keep on innovation and products developing all days to meet the edge-leading demand of the market. We are good at learning from your suggestion to make the most perfect product.

**Lead Time**  
We have the ability to do large material stock for our standards products to ensure your fast lead time request.

**OEM/ODM Customization**  
Our top R&D team both in China and abroad, with rich experience in international protooco, which support us to offer OEM/ODM service for our clients all over the world.



# About the exhibition



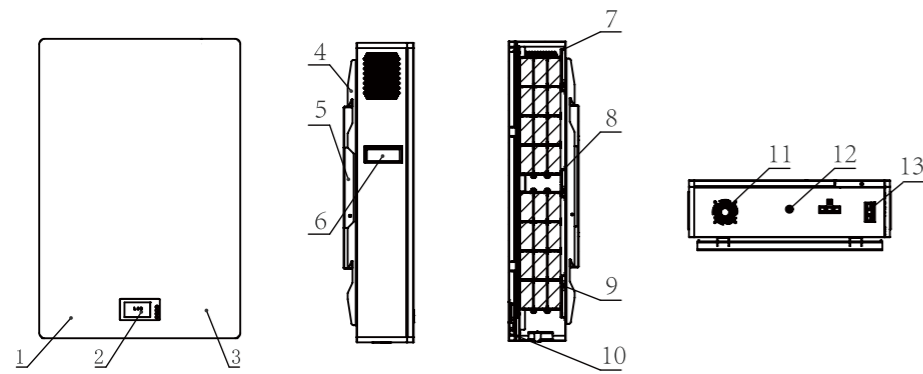
# 51.2V Energy Storage LiFePO4 Battery-Powerwall-PW



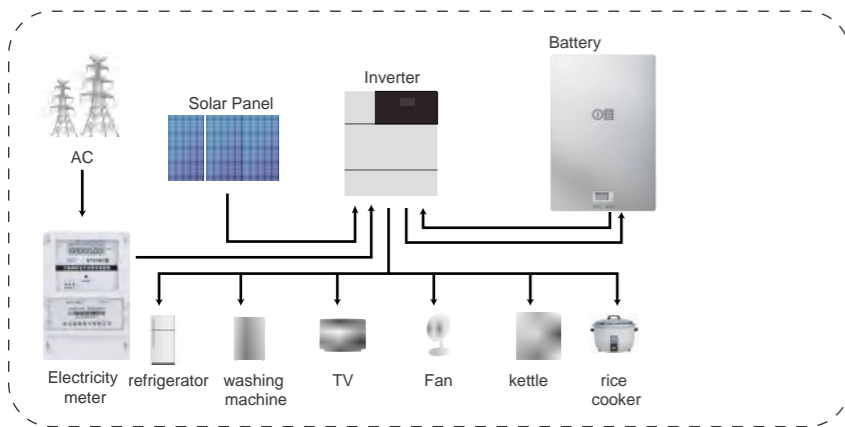
## Features

- LCD monitor the energy storage power data and operating status.
- High-quality LiFePO4 battery, safety, deep cycle and long lifespan.
- Air cooling to improve the reliability of the product.
- External main switch to reduce product power consumption and improve safety.
- Foot pads and wall brackets, which can meet the installation and use of different place.
- BMS built inside, over-voltage, over-load, over-temperature protection, etc.
- Compatible, can be connected to different types of loads within the voltage range.
- Support up to 15 modules in parallel.

## Structural parts description



1. White plate
2. LCD display
3. Black plate
4. Battery bracket
5. Wall mounted bracket
6. Handle
- 7/8. Module holder
9. Stiffening plate
10. DC fan
11. OFF/ON
12. Communication
13. Output connector



## 51.2V Energy Storage LiFePO4 Battery-Powerwall-PW



## Specifications

	Model	ZECO-15050BL-PW	ZECO-160100BL-PW
<b>Basic Characteristics</b>	Nominal Voltage	51.2V	51.2V
	Nominal Capacity	100Ah	200Ah
	Efficiency	≥96%	≥96%
	Inner Resistance	10mΩ	7mΩ
	Cell Type	LiFePO <sub>4</sub>	LiFePO <sub>4</sub>
<b>Charging Characteristics</b>	Charge Voltage	58.4V	58.4V
	Standard Charging Current	20A	40A
	Max.Continuous Charging Current	1000A	100A
<b>Discharge Characteristics</b>	Standard Discharge Current	20A	40A
	Continuous Discharge Current	100A	100A
	Peak Discharge Current	200A (3s)	200A (3s)
	Discharge Cut-off Voltage	42V	42V
<b>Environmental Requirements</b>	Charge Temperature Range	0~60°C	0~60°C
	Discharge Temperature Range	-10°C~65°C	-10°C~65°C
	Storage Temperature Range	-5~40°C	-5~40°C
	Storage Humidity	65±20% HR	65±20%HR
<b>Mechanical Characteristics</b>	Size(L×W×H)	440×170×560mm	440×206×670
	Package Size (L×W×H)	625×520×335mm	750×520×385mm
	Shell Material	SPCC	SPCC
	Net Weight	42kg	73kg
	Gross Weight	53kg	91kg
	Package Method	1pcs per carton	1pcs per carton
<b>Others Characteristics</b>	Cycle Life	≥6000 times	≥6000 times
	Self Discharge	2% per month	2% per month
	SOC Indication	LED Light & LCD Screen	LED Light & LCD Screen
	Communication Mode	RS485/CAN	RS485/CAN
	Matching Inverter	Growatt, Goodwe, Deye, Luxpower, SRNE etc	



### High cycle life

4000 cycles @80% DoD for effectively lower total of ownership cost.



### Quickly recharge

Save time and increase productivity with less down time thanks to superior charge/discharge efficiency.



### Longer service life

Low maintenance batteries with stable chemistry.



### Extreme heat tolerance

Suitable for use in a wider range of applications where ambient temperature is unusually high: up to +60°C.



### Built in circuit protection

Battery Management System (BMS) is incorporated against abuse.



### Lightweight

Lithium batteries provide more Wh/Kg while also being up to 1/3 the weight of its SLA equivalent.



### Better storage

Up to 6 months thanks to its extremely low self discharge (LSD) rate and no risk of sulphation.



### Function

Support parallel operation

# High Voltage LiFePO4 Battery Storage System-HV

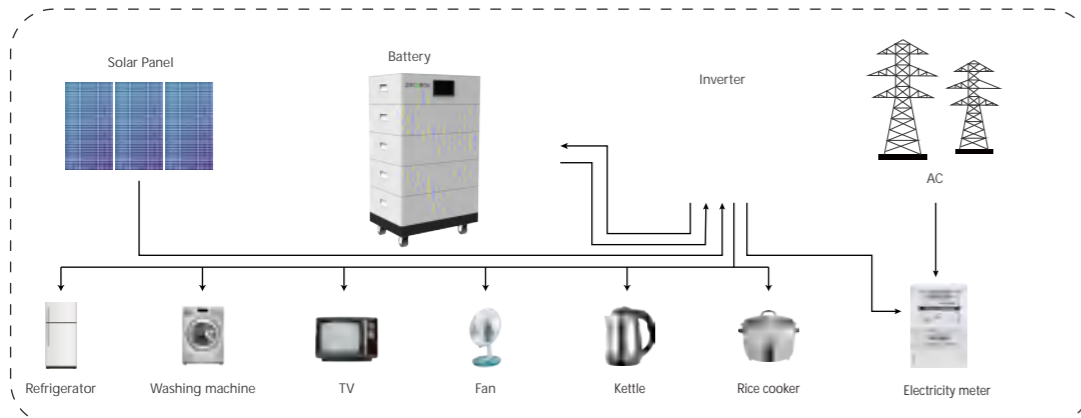


## Features

- Capable of High-Powered Emergency-Backup and Off-Grid Functionality
- Highest Efficiency Thanks to a Real High-Voltage Series Connection
- The Patented Modular Plug Design Requires no Internal Wiring and Allows for Maximum Flexibility and Ease of Use
- Grand A Lithium Iron Phosphate (LFP) Battery: Maximum Safety, Life Cycle, and Power
- Compatible With Leading High Voltage Battery Inverters
- Highest Safety Standards



## Structural parts description



## 51.2V Energy Storage LiFePO4 Battery-HV



### Specifications

Datasheet	ZECO-15100BL-HV	ZECO-30100BL-HV	ZECO-45100BL-HV	ZECO-60100BL-HV	ZECO-75100BL-HV	ZECO-90100BL-HV	ZECO-105100BL-HV	ZECO-105100BL-HV
System Demo								
Battery Module	ZECO-15100BL-HV							
Number of Modules	1	2	3	4	5	6	7	8
Energy Capacity	100Ah	100Ah	100Ah	100Ah	100Ah	100Ah	100Ah	100Ah
Energy Capacity	4.8KWh	9.6KWh	14.4KWh	19.2KWh	24KWh	28.8KWh	33.6KWh	38.4KWh
Size(LxWxH)	574x395x134mm	574x395x302mm	574x395x470mm	574x395x638mm	574x395x806mm	574x395x974mm	574x395x1142mm	574x395x1310mm
Weight	49kg	88kg	127kg	166kg	205kg	244kg	283kg	322kg
Standard Charge/Discharge Current	75A	75A	100A	100A	100A	100A	100A	100A

### General

Battery Type	Lithium Iron Phosphate (LFP)
Nominal Voltage	48V
Operating voltage Range	40- 54.7V
IP Protection	IP65
Installation	Floor installation
Operation Temperature	-10-60°C

### Features

BMS Monitoring Parameters	SOC, System voltage,current, cell voltage, cell temperature, PCBA temperature measurement
Communication Port	CAN
Waranty: 5 years /10 years	Yes/optional



#### High cycle life

4000 cycles @80% DoD for effectively lower total of ownership cost.



#### Quickly recharge

Save time and increase productivity with less down time thanks to superior charge/discharge efficiency.



#### Longer service life

Low maintenance batteries with stable chemistry.



#### Extreme heat tolerance

Suitable for use in a wider range of applications where ambient temperature is unusually high: up to +60°C.



#### Built in circuit protection

Battery Management System (BMS) is incorporated against abuse.



#### Lightweight

Lithium batteries provide more Wh/Kg while also being up to 1/3 the weight of its SLA equivalent.



#### Better storage

Up to 6 months thanks to its extremely low self discharge (LSD) rate and no risk of sulphation.



#### Function

Support parallel operation

# All-in-one Residential Energy Storage System-S2



## Features

- Vertical industry integration ensures more than 5000 cycles with 80% DoD.
- Integrated inverter design, easy to use and quick to install. Small size, minimizing installation time and cost Compact and stylish design suitable for your sweet home environment.
- The inverter has a variety of working modes. Whether it is used for main power supply in the area without electricity or backup power supply in the area with unstable power to deal with sudden power failure, the system can respond flexibly.
- A variety of charging methods, which can be charged with photovoltaic or commercial power, or both at the same time
- You can use 4 batteries in parallel at the same time, and can provide a maximum of 20kwh for your use.



### High cycle life

4000 cycles @80% DoD for effectively lower total of ownership cost.



### Longer service life

Low maintenance batteries with stable chemistry.



### Built in circuit protection

Battery Management System (BMS) is incorporated against abuse.



### Better storage

Up to 6 months thanks to its extremely low self discharge (LSD) rate and no risk of sulphation.



### Quickly recharge

Save time and increase productivity with less down time thanks to superior charge/discharge efficiency.



### Extreme heat tolerance

Suitable for use in a wider range of applications where ambient temperature is unusually high: up to +60°C.



### Lightweight

Lithium batteries provide more Wh/Kg while also being up to 1/3 the weight of its SLA equivalent.



### Function

Support parallel operation

## 51.2V Energy Storage LiFePO4 Battery-S2



## Specifications

	ZECO-AIO48V05-S2	ZECO-AIO48V05-S2	ZECO-AIO48V05-S2	ZECO-AIO48V05-S2
<b>BATTERY TECHNICAL SPECIFICATION</b>				
Battery model	ZECO-AIO48V05-S2			
Number of batteries	1	2	1	2
Battery Energy	5.12kWh	10.24kWh	15.36kWh	20.48kWh
Battery Capacity	100AH	200AH	300AH	400AH
Weight	80kg	130kg	190kg	230kg
Dimension L x D x H	1190x600x184mm	1800x600x184mm	1800x600x184mm 690x600x184mm	1800x600x184mm 1300x600x184mm
Battery Type	LiFePO4			
Battery Rated Voltage	51.2V			
Battery Working Voltage Range	22.4 ~ 28.8V			
Maximum Charging Current	150A			
Maximum Discharging Current	150A			
DOD	80%			
Designed Life-span	5000			
<b>PV CHARGE</b>				
Solar Charge Type	MPPT			
Maximum Output Power	4000W			
PV Charging Current Range	0~80A			
PV Operating Voltage Range	120~500V			
MPPT Voltage Range	120~450V			
<b>AC CHARGE</b>				
Maximum Charge Power	2240W		1120W	
AC Charging Current Range	0~80A		0~40A	
Rated Input Voltage	220/230Vac		110/120Vac	
Input Voltage Range	90~280Vac		90~140Vac	
<b>AC OUTPUT</b>				
Rated Output Power	3500W			
Maximum Output Current	30A		40A	
Frequency	50Hz		60Hz	
Overload Current	35A		45A	
<b>BATTERY INVERTER OUTPUT</b>				
Rated Output Power	3500W			
Maximum Peak Power	6000VA			
Power Factor	1			
Rated Output Voltage (Vac)	230Vac		120Vac	
Frequency	50Hz		60Hz	
Auto Switch Period	< 15ms			
THD	< 3%			
<b>GENERAL DATA</b>				
Communication	RS485/CAN/WIFI			
Storage time / temperature	6 months @25°C;3 months @35°C;1 months @45°C;			
Charging temperature range	0~45°C			
Discharging temperature range	-10~45°C			
Operation Humidity	5% ~ 85%			
Nominal Operation Altitude	< 2000m			
Cooling Mode	Force-Air Cooling			
Noise	60dB(A)			
Ingress Protection Rating	IP20			
Recommended Operation Environment	Indoor			
Installation Method	Vertical			
Certification	UN38.3,MSDS,EN55032,EN55024,EN61000-3-2,EN61000-3-3			

# All-in-one Residential Energy Storage System-S1



## Features

- Vertical industry integration ensures more than 5000 cycles with 80% DoD.
- Integrated inverter design, easy to use and quick to install. Small size, minimizing installation time and cost Compact and stylish design suitable for your sweet home environment.
- The inverter has a variety of working modes. Whether it is used for main power supply in the area without electricity or backup power supply in the area with unstable power to deal with sudden power failure, the system can respond flexibly.
- A variety of charging methods, which can be charged with photovoltaic or commercial power, or both at the same time
- You can use 4 batteries in parallel at the same time, and can provide a maximum of 20kwh for your use.



### High cycle life

4000 cycles @80% DoD for effectively lower total of ownership cost.



### Quickly recharge

Save time and increase productivity with less down time thanks to superior charge/discharge efficiency.



### Longer service life

Low maintenance batteries with stable chemistry.



### Extreme heat tolerance

Suitable for use in a wider range of applications where ambient temperature is unusually high: up to +60°C.



### Built in circuit protection

Battery Management System (BMS) is incorporated against abuse.



### Lightweight

Lithium batteries provide more Wh/Kg while also being up to 1/3 the weight of its SLA equivalent.



### Better storage

Up to 6 months thanks to its extremely low self discharge (LSD) rate and no risk of sulphation.



### Function

Support parallel operation

## 51.2V Energy Storage LiFePO4 Battery-S1

ZECOBX

### Specifications

	ZECO-AIO48V05-S1	ZECO-AIO48V10-S1	ZECO-AIO48V15-S1	ZECO-AIO48V20-S1
<b>BATTERY</b>				
Battery Module	1	2	3	4
Battery Energy	5.12kWh	10.24kWh	15.36kWh	20.48kWh
Battery Capacity	100AH	200AH	300AH	400AH
Weight	80kg	133kg	186kg	239kg
Dimension L x D x H	710×450×400	710×450×600	710×450×800	710×450×1000
Battery Type	LiFePO4			
Battery Rated Voltage	51.2V			
Battery Working Voltage Range	44.8 ~ 57.6V			
Maximum Charging Current	100A			
Maximum Discharging Current	100A			
DOD	80%			
Parallel Quantity	4			
Designed Life-span	6000			
<b>PV CHARGE</b>				
Solar Charge Type	MPPT			
Maximum Output Power	5KW			
PV Charging Current Range	0 ~ 80A			
PV Operating Voltage Range	120 ~ 500V			
MPPT Voltage Range	120 ~ 450V			
<b>AC CHARGE</b>				
Maximum Charge Power	3150W			
AC Charging Current Range	0 ~ 60A			
Rated Input Voltage	220/230Vac			
Input Voltage Range	90 ~ 280Vac			
<b>AC OUTPUT</b>				
Rated Output Power	5KW			
Maximum Output Current	30A			
Frequency	50Hz			
Overload Current	35A			
<b>BATTERY INVERTER OUTPUT</b>				
Rated Output Power	5KW			
Maximum Peak Power	10KVA			
Power Factor	1			
Rated Output Voltage (Vac)	230Vac			
Frequency	50Hz			
Auto Switch Period	< 15ms			
THD	< 3%			
<b>GENERAL DATA</b>				
Communication	RS485/CAN/WIFI			
Storage time / temperature	6 months @25°C; 3 months @35°C; 1 months @45°C;			
Charging temperature range	0 ~ 45°C			
Discharging temperature range	-10 ~ 45°C			
Operation Humidity	5% ~ 85%			
Nominal Operation Altitude	< 2000m			
Cooling Mode	Force-Air Cooling			
Noise	60dB(A)			
Ingress Protection Rating	IP20			
Recommended Operation Environment	Indoor			
Installation Method	Horizontal			
Certification	UN38.3,MSDS,EN55032,EN55024,EN61000-3-2,EN61000-3-3			

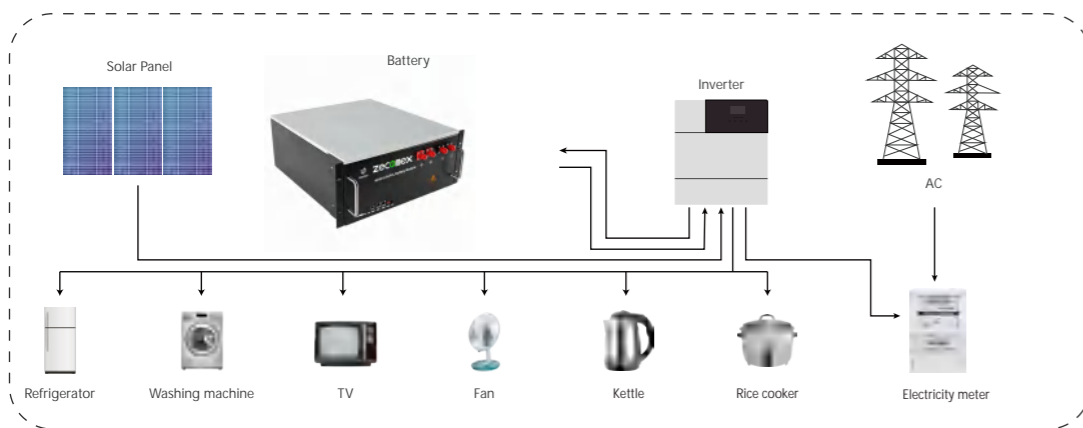
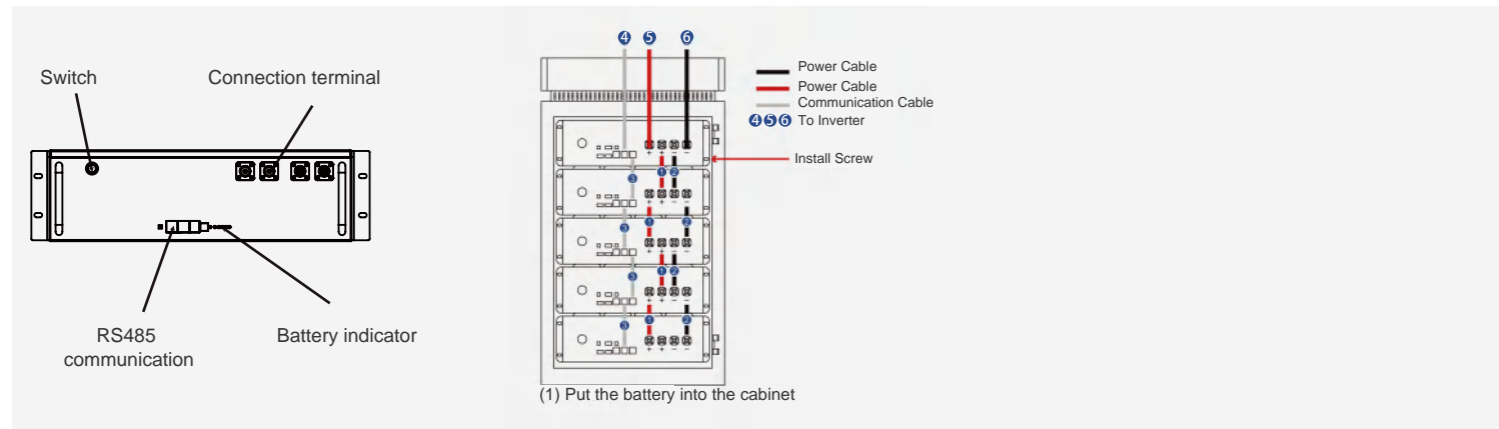
# LiFePO4 Energy Storage Battery-Rack-BR



## Features

- Standardized design: standard 3U and 4U case, good applicability
- In parallel to enlarge energy: Add the current limiting module, support multiple battery parallel use, expand the battery capacity, meet the high energy demand of customers.
- Intelligent lithium battery management system: With RS485 communication, you can monitor the battery status at any time and set protection parameters such as charge and discharge according to customers' requirements.
- Warning function: Warning functions such as overcharge, overdischarge, overcurrent, high temperature and low temperature can greatly reduce the potential safety hazard.
- Balancing: Automatic collection of battery single series voltage, pressure difference up to 30mV (can be set), automatic start equalization function.

## Structural parts description



# LiFePO4 Energy Storage Battery-Rack-BR



## Specifications

	Model	ZECO-15050BL-BR	ZECO-150100BL-BR	ZECO-160100BL-BR
<b>Basic Characteristics</b>	Nominal Voltage	48V	48V	51.2V
	Nominal Capacity	50Ah	100Ah	100Ah
	Efficiency	≥96%	≥96%	≥96%
	Inner Resistance	10mΩ	7mΩ	7mΩ
	Cell Type	LiFePO <sub>4</sub>	LiFePO <sub>4</sub>	LiFePO <sub>4</sub>
<b>Charging Characteristics</b>	Charge Voltage	54.71V	54.71V	58.2V
	Standard Charging Current	10A	20A	20A
	Max.Continuous Charging Current	50A	100A	100A
<b>Discharge Characteristics</b>	Standard Discharge Current	25A	50A	50A
	Continuous Discharge Current	50A	100A	100A
	Peak Discharge Current	100A (3s)	200A (3s)	200A (3s)
	Discharge Cut-off Voltage	45.5V	45.5V	42V
<b>Environmental Requirements</b>	Charge Temperature Range	0~60°C	0~60°C	0~60°C
	Discharge Temperature Range	-20°C~65°C	-20°C~65°C	-20°C~65°C
	Storage Temperature Range	-5~40°C	-5~40°C	-5~40°C
	Storage Humidity	65±20% HR	65±20% HR	65±20%HR
<b>Mechanical Characteristics</b>	Size(L×W×H)	453×493×133mm	520×241×175mm	520×491×171
	Package Size (L×W×H)	530×480×230mm	530×540×260mm	530×540×260mm
	Shell Material	SPCC	SPCC	SPCC
	Net Weight	27.5kg	41kg	45kg
	Gross Weight	39.5kg	47kg	55kg
	Package Method	1pcs per carton	1pcs per carton	1pcs per carton
	Cycle Life	≥6000 times	≥6000 times	≥6000 times
<b>Others Characteristics</b>	Self Discharge	2% per month	2% per month	2% per month
	SOC Indication	LED Light	LED Light	LED Light
	Communication Mode	RS485	RS485/CAN	RS485/CAN
	Matching Inverter	Growatt, Goodwe, Deye, Luxpower, SRNE etc		



**High cycle life**  
4000 cycles @80% DoD for effectively lower total of ownership cost.



**Quickly recharge**  
Save time and increase productivity with less down time thanks to superior charge/discharge efficiency.



**Longer service life**  
Low maintenance batteries with stable chemistry.



**Extreme heat tolerance**  
Suitable for use in a wider range of applications where ambient temperature is unusually high: up to +60°C.



**Built in circuit protection**  
Battery Management System (BMS) is incorporated against abuse.



**Lightweight**  
Lithium batteries provide more Wh/Kg while also being up to 1/3 the weight of its SLA equivalent.



**Better storage**  
Up to 6 months thanks to its extremely low self discharge (LSD) rate and no risk of sulphation.



**Function**  
Support parallel operation



# Portable Power Station-PPS



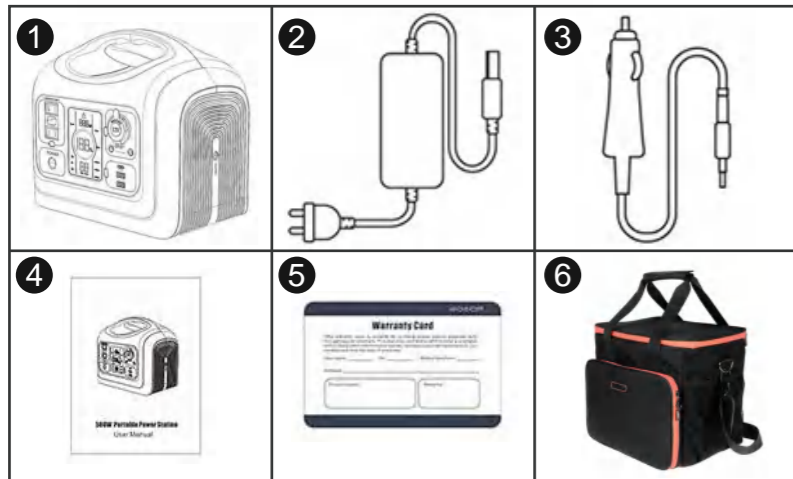
## Features

- LCD monitor the energy storage power data and operating status.
- High-quality LiFePO4 battery, safety, deep cycle and long lifespan.
- Air cooling to improve the reliability of the product.
- External main switch to reduce product power consumption and improve safety.
- Foot pads and wall brackets, which can meet the installation and use of different place.

## Product accessories



- HD Screen
- 110V/600W AC Outlet
- AC ON/OFF Switch
- Power ON/OFF Switch
- DC ON/OFF Switch
- 12V Car Outlet
- 12V/5A 5521 DC Outlet
- USB-C PD 60W MAX
- USB-A QC 3.0
- USB ON/OFF Switch



1. 1800W Portable power station
2. Power adapter
3. Car charger to DC7909 line
4. Use manual
5. Two-year warranty card
6. Portable Hand Bag

# Portable Power Station-PPS



## Specifications

Description	Parameters	
Mode	ZECO-PPS-600	ZECO-PPS-1200
Rated voltage	100~120Vac/220~240Vac	
Rated power	600W	1200W
Peak power	1000W	3600W
Frequency	50/60Hz	
Rated voltage	12V	
Rated current	10A	
USB-A output	5V/3A; 9V/1.5A (18W Max)	
USB-C output	5V/3A; 9V/3A; 12A/3A; 15V/3A; 20V/3A (60W Max)	
USB-C output	5V/3A; 9V/3A; 12A/1.5A (18W Max)	
LED Light	7W Three Working Mode	5W Three Working Mode
Input voltage	12V-30V	
Input power	100W Max	200W Max
Rated capacity	595Wh	992Wh
Rated voltage	19.2Vdc	32Vdc
Battery cell type	LiFePO <sub>4</sub>	
Waterproof	IP21	
Working temperature	0-40 °C	
Size	267*197*247mm	330*220*289mm
Net weight	6.8kg	11kg

PRODUCT	Laptop (56W)	Mobile Phone (12.4W)	Camera (28W)	Speaker (20W)	Drone (22.2W)	Car refrigerator (65W)	Tablet (30W)	Outdoor light (4W)
ZECO-600 (600W)	Discharge 10 hours	Discharge 48 hours	Discharge 21 hours	Discharge 30 hours	Discharge 27 hours	Discharge 9 hours	Discharge 20 hours	Discharge 150 hours
ZECO-1200 (1200W)	Discharge 21 hours	Discharge 96 hours	Discharge 42 hours	Discharge 60 hours	Discharge 54 hours	Discharge 18 hours	Discharge 40 hours	Discharge 300 hours

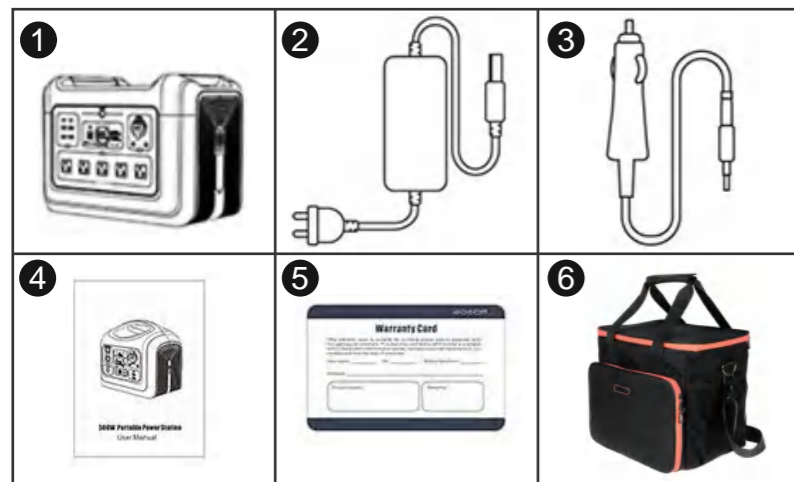
# Portable Power Station-PPS



## Features

- LCD monitor the energy storage power data and operating status.
- High-quality LiFePO4 battery, safety, deep cycle and long lifespan.
- Air cooling to improve the reliability of the product.
- External main switch to reduce product power consumption and improve safety.
- Foot pads and wall brackets, which can meet the installation and use of different place.

## Product accessories



1. 1800W Portable power station
2. Power adapter
3. Car charger to DC7909 line
4. Use manual
5. Two-year warranty card
6. Portable Hand Bag

## Handbag Parameters

Dimension	390*440*65mm
Net weight	1Kg
Suitable for	600W/1200W portable power station

## Portable Power Station-PPS

ZECOMEX

## Specifications

Description	Parameters	
	ZECO-PPS-1800	ZECO-PPS-2400
Mode	ZECO-PPS-1800	ZECO-PPS-2400
Rated voltage	100-120Vac/220-240Vac	
Rated power	1800W	2400W
Peak power	4000W	4400W
Frequency	50/60Hz	
Rated voltage	12V	
Rated current	10A	
USB-A output	5V/3A; 9V/1.5A (18W Max)	
USB-C output	5V/3A; 9V/3A; 12A/3A; 15V/3A; 20V/3A (60W Max)	
USB-C output	5V/3A; 9V/3A; 12A/1.5A (18W Max)	
LED Light	5W Three Working Mode	7W Three Working Mode
Input voltage	12V-30V	
Input power	2*200W Max	2*24V/200W Max
Rated capacity	1448Wh	/
Rated voltage	32Vdc	/
Battery cell type	LiFePO <sub>4</sub>	
Waterproof	IP21	
Working temperature	0-40 °C	
Size	385*243*340mm	420*270*313mm
Net weight	15kg	20.7kg

PRODUCT	Laptop (56W)	Mobile Phone (12.4W)	Camera (28W)	Speaker (20W)	Drone (22.2W)	Car refrigerator (65W)	Tablet (30W)	Outdoor light (4W)
ZECO-1800 (1800W)	Discharge 32 hours	Discharge 145 hours	Discharge 64 hours	Discharge 90 hours	Discharge 81 hours	Discharge 27 hours	Discharge 60 hours	Discharge 450 hours
ZECO-2400 (2400W)	Discharge 43 hours	Discharge 193 hours	Discharge 85 hours	Discharge 120 hours	Discharge 108 hours	Discharge 36 hours	Discharge 80 hours	Discharge 600 hours

# Solar Generator for Portable Power Station



## Description

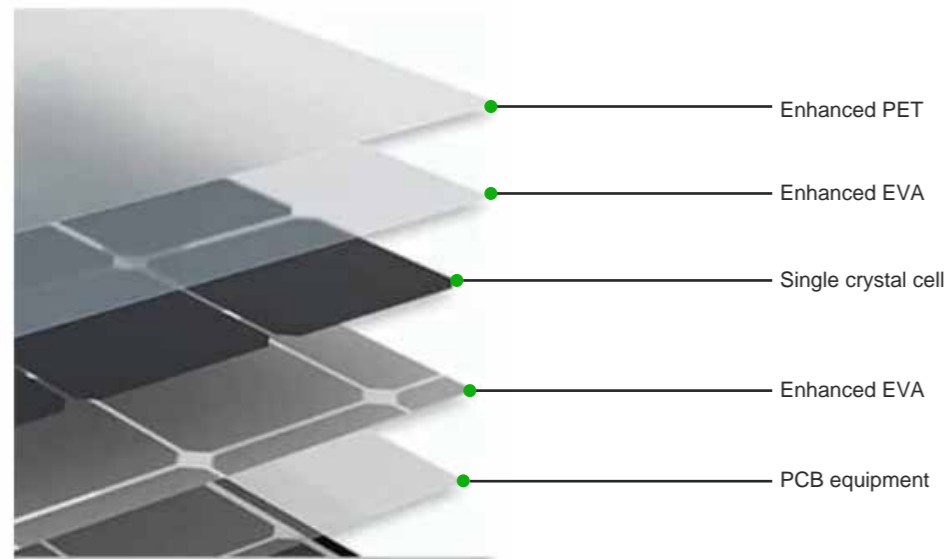
Made up of efficient monocrystalline silicon cells, it can recharge portable power stations, and keep your equipment running without interruption when connected to our portable power station. solar panel, high conversion efficiency up to 20%, pair with 600W to get your solar generator kit. Suited for outdoor adventures or emergency back up for blackouts. The Solar Panel is IP65 water-resistant that will protect from water splashing. solar panel with kickstand: Foldable design and weighs only 5.1kg. Adjust the angle with the built-in kickstand.

## Application

- Recharge for Power Station

## High Conversion Efficiency

### Multiple protection



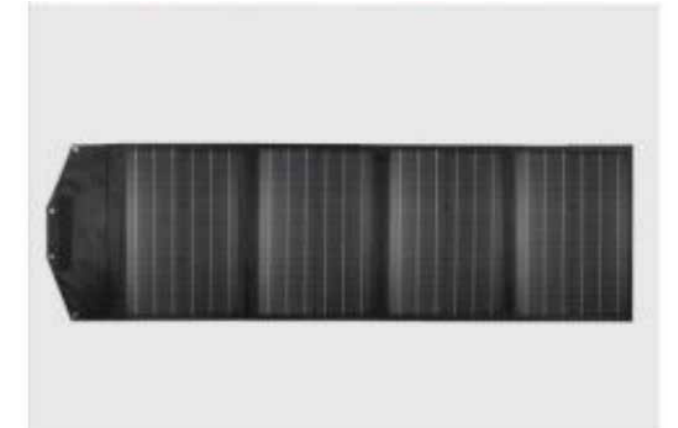
# Solar Generator for Portable Power Station



## Technical Specification

Type	Single Crystal Silicon		
Output Power	100W	200W	400W
Cell Efficiency	20%-22%	20%	20%
Power Voltage	19.8V	18V	18V
Power Current	5.28A	5.28A	5.28A
DC Output	18V/100W	18V/100W	18V/100W
Dimensions	423*370*35 (folded) 1718*423*5 (unfolded)	423*370*35 (folded) 1718*415*5 (unfolded)	415*370*35 (folded) 1670*415*5 (unfolded)
Net weight	5.1kg	9.5kg	19kg
Waterproof	IPX4	IPX4	IPX4
Operating Temperature Range	-10~70°C	-10~70°C	-10~70°C
Item Dimensions	L x W x H 16.65 x 14.57 x 1.38 inches	L x W x H 16.65 x 14.57 x 1.38 inches	L x W x H 16.65 x 14.57 x 1.38 inches

## Package



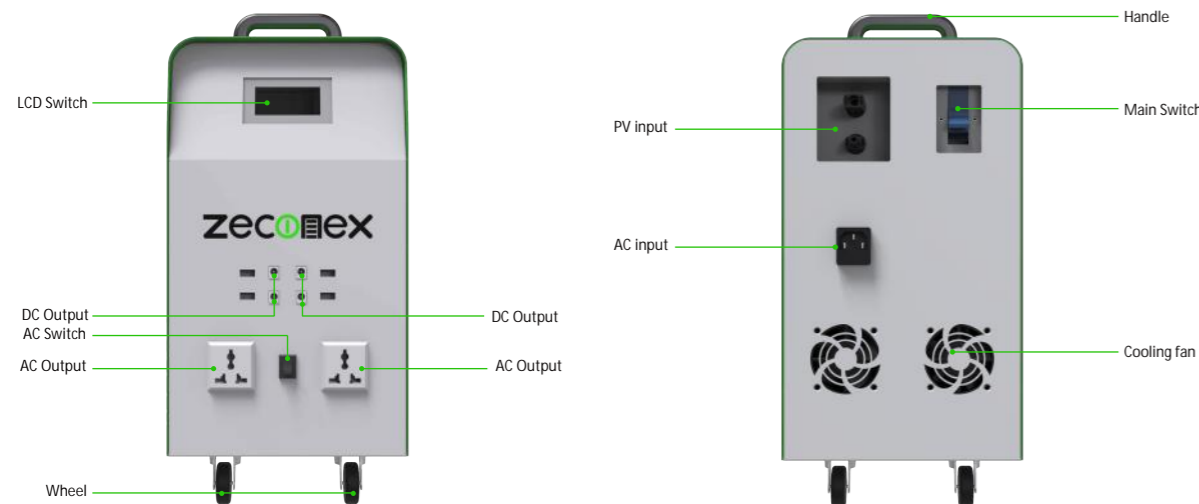
# 12.8V/25.6V Energy Storage LiFePO4 Battery-PC



## Features

- Mobile and convenient have handles and wheels
- Overload protection pure sine wave stable output
- The battery capacity is large and the usage rate is high
- Widely use support high-power electrical appliance

## Structural parts description



### High cycle life

4000 cycles @80% DoD for effectively lower total of ownership cost.



### Longer service life

Low maintenance batteries with stable chemistry.



### Built in circuit protection

Battery Management System (BMS) is incorporated against abuse.



### Better storage

Up to 6 months thanks to its extremely low self discharge (LSD) rate and no risk of sulphation.



### Quickly recharge

Save time and increase productivity with less down time thanks to superior charge/discharge efficiency.



### Extreme heat tolerance

Suitable for use in a wider range of applications where ambient temperature is unusually high: up to +60°C.



### Lightweight

Lithium batteries provide more Wh/Kg while also being up to 1/3 the weight of its SLA equivalent.



### Function

Support parallel operation

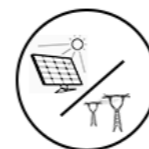
## 12.8V/25.6V Energy Storage LiFePO4 Battery-PC

Zecorex

## Product feature



LiFePO<sub>4</sub> Battery



Mixed Charge



Multiple Output



UPS Function

## Specifications

Model	ZECO-PC-500W	ZECO-PC-1000W	ZECO-PC-2000W
	Lithium ion Battery		
Nominal Voltage	12.8V	25.6V	25.6V
Nominal Energy	1000Wh	2000Wh	5000Wh
Overcharge Protection Voltage	14.6V	29.2V	29.2V
Over-discharge Protection Voltage	10.0V	20.0V	20.0V
Standard Charge Current	10A	20A	40A
Max Continuous Discharge Current	20A	40A	80A
	Inverter & Output		
Nominal Power	500W	1000W	2000W
AC Output	220V 50Hz* 2pcs (110V 60Hz is optional)		
Output Wave Form	Pure sine wave		
Output Efficiency	95%	95%	90%
USB 5V Output	1A*2pcs/2A*2pcs		
DC 12V Output	5A max*4pCS		
	Charge & Input		
PV Charge	Yes	Yes	Yes
Charging Mode	PWM	PWM	MPPT
Max Charge Current	10A	15A	60A
Advised Solar Panel	180W max, 18V	500W max, 36V	1700W max, 30~120V
PV Charge Connector	MC4	MC4	Connector bus
AC Charge	No	yes	yes
	Other Information		
Battery Capacity Indicator	LED light display	LCD display panel	LCD display panel
AC Output Indicator	LCD display panel		
Working Temp	-10~60 °C		
Weight	384x202x367mm	430x213x450mm	630x312x632mm
Size	12.3±0.5kg	21.7±0.5kg	52.4±2.0kg
Quality Warranty	2 years		