

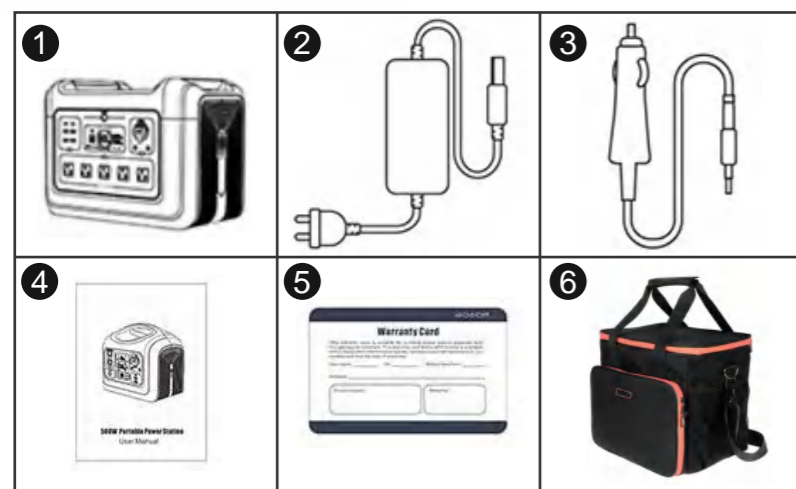
# Portable Power Station-PPS



## Features

- LCD monitor the energy storage power data and operating status.
- High-quality LiFePO4 battery, safety, deep cycle and long lifespan.
- Air cooling to improve the reliability of the product.
- External main switch to reduce product power consumption and improve safety.
- Foot pads and wall brackets, which can meet the installation and use of different place.

## Product accessories



1. 1800W Portable power station
2. Power adapter
3. Car charger to DC7909 line
4. Use manual
5. Two-year warranty card
6. Portable Hand Bag

## Handbag Parameters

Dimension	390*440*65mm
Net weight	1Kg
Suitable for	600W/1200W portable power station

## Portable Power Station-PPS

ZECOMEX

## Specifications

Description	Parameters	
	ZECO-PPS-1800	ZECO-PPS-2400
Mode	100~120Vac/220~240Vac	
Rated voltage	100~120Vac/220~240Vac	
Rated power	1800W	2400W
Peak power	4000W	4400W
Frequency	50/60Hz	
Rated voltage	12V	
Rated current	10A	
USB-A output	5V/3A; 9V/1.5A (18W Max)	
USB-C output	5V/3A; 9V/3A; 12A/3A; 15V/3A; 20V/3A (60W Max)	
USB-C output	5V/3A; 9V/3A; 12A/1.5A (18W Max)	
LED Light	5W Three Working Mode	7W Three Working Mode
Input voltage	12V-30V	
Input power	2*200W Max	2*24V/200W Max
Rated capacity	1448Wh	/
Rated voltage	32Vdc	/
Battery cell type	LiFePO4	
Waterproof	IP21	
Working temperature	0-40℃	
Size	385*243*340mm	420*270*313mm
Net weight	15kg	20.7kg

PRODUCT	Laptop (56W)	Mobile Phone (12.4W)	Camera (28W)	Speaker (20W)	Drone (22.2W)	Car refrigerator (65W)	Tablet (30W)	Outdoor light (4W)
ZECO-1800 (1800W)	Discharge 32 hours	Discharge 145 hours	Discharge 64 hours	Discharge 90 hours	Discharge 81 hours	Discharge 27 hours	Discharge 60 hours	Discharge 450 hours
ZECO-2400 (2400W)	Discharge 43 hours	Discharge 193 hours	Discharge 85 hours	Discharge 120 hours	Discharge 108 hours	Discharge 36 hours	Discharge 80 hours	Discharge 600 hours